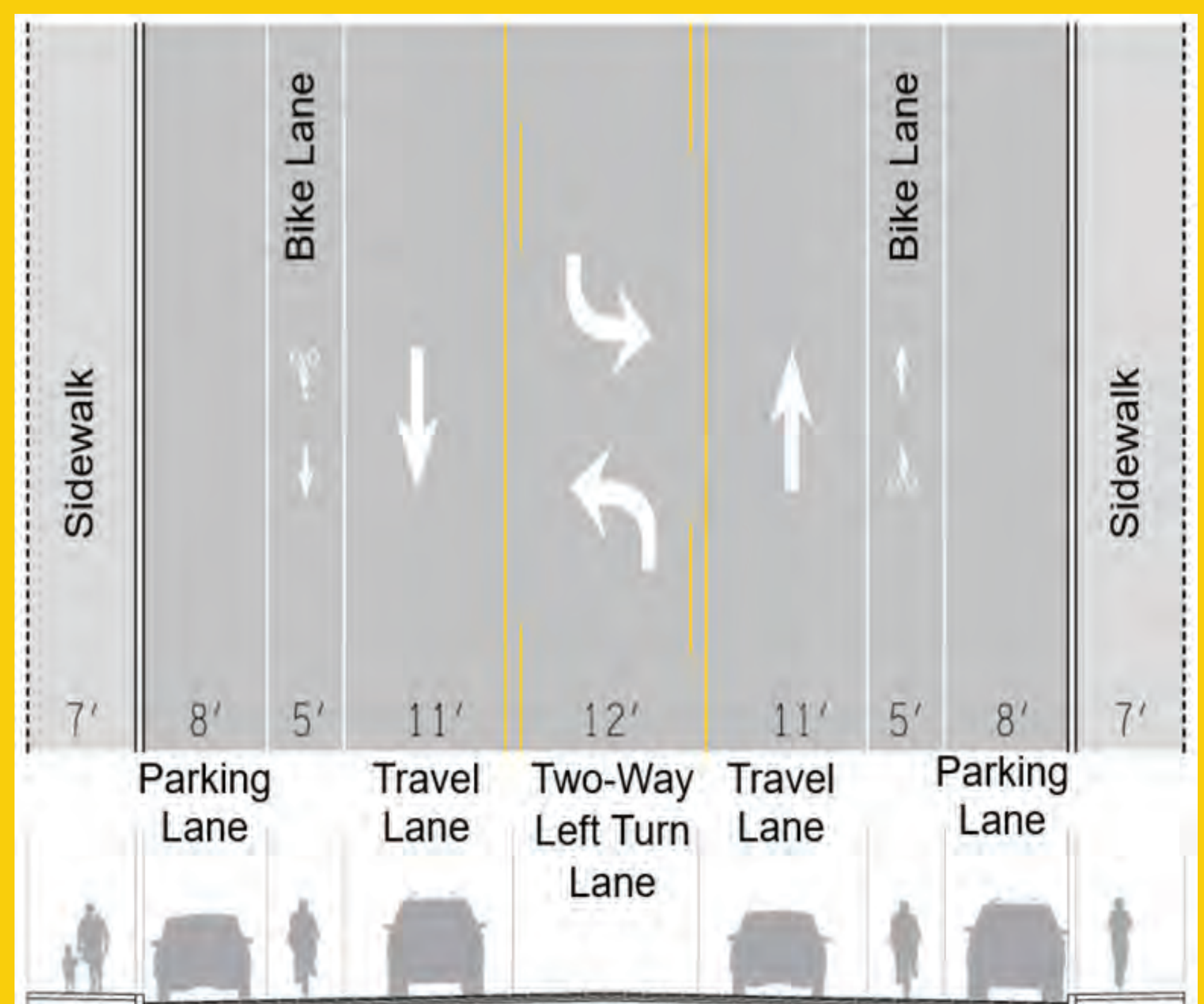
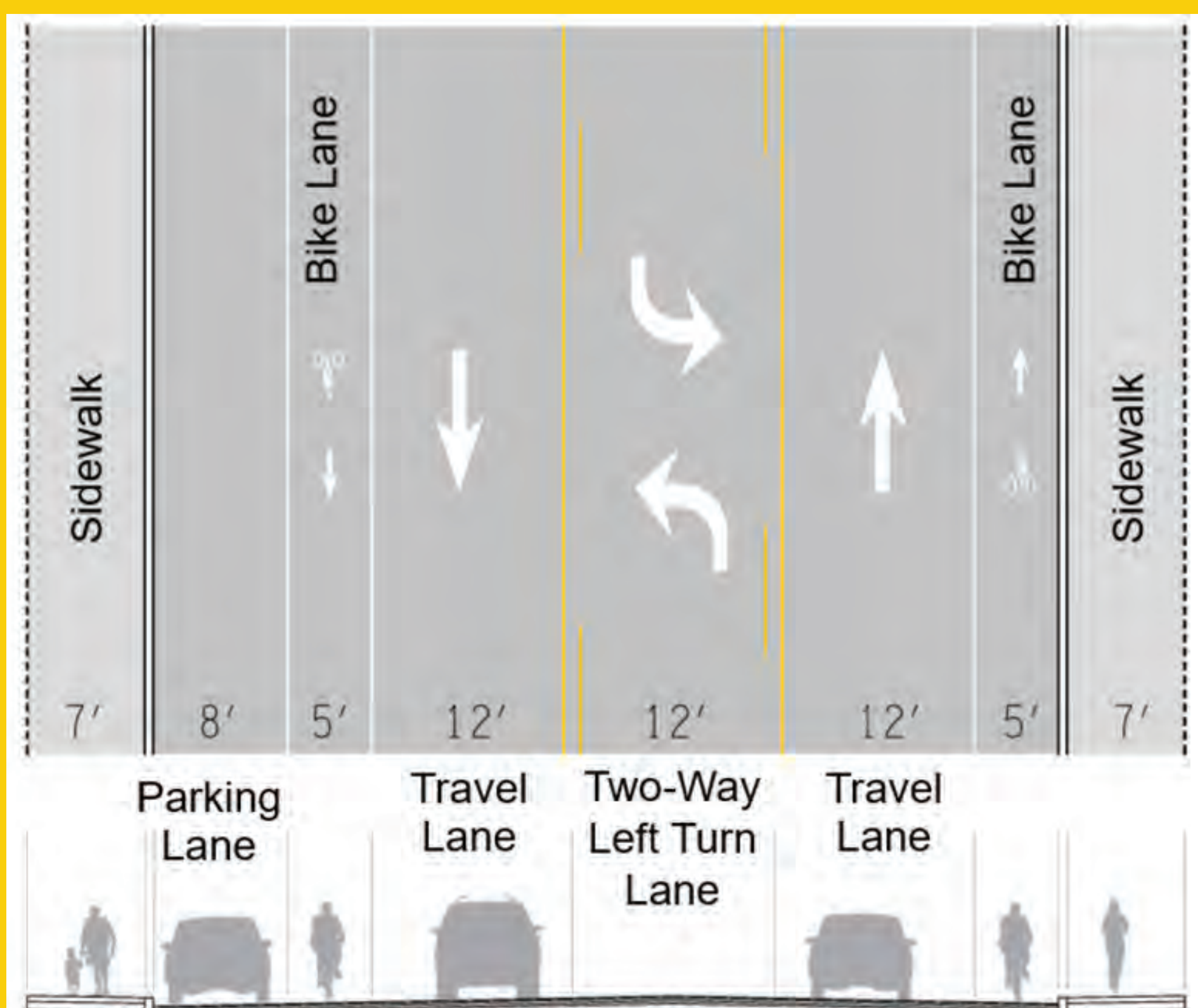
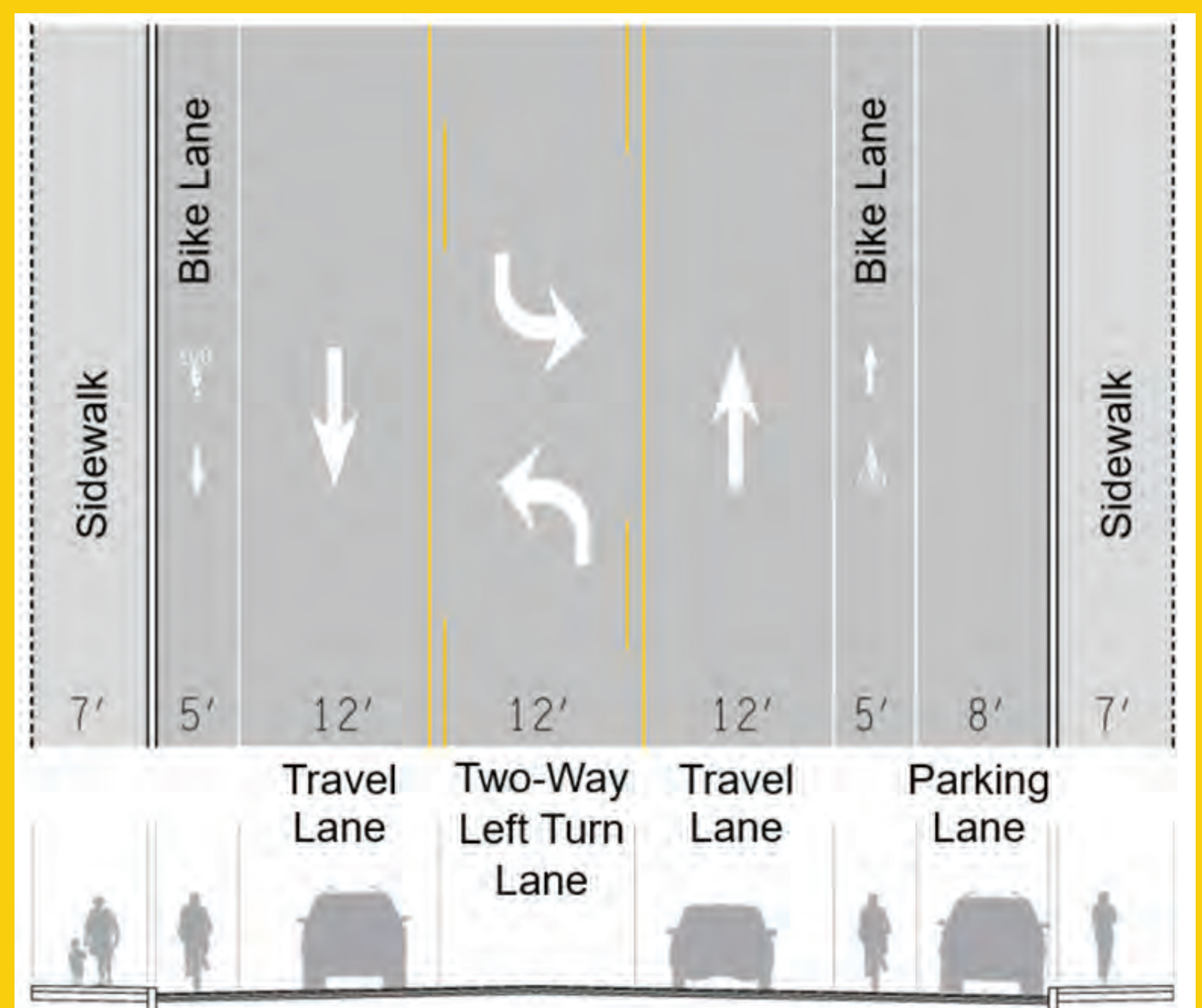
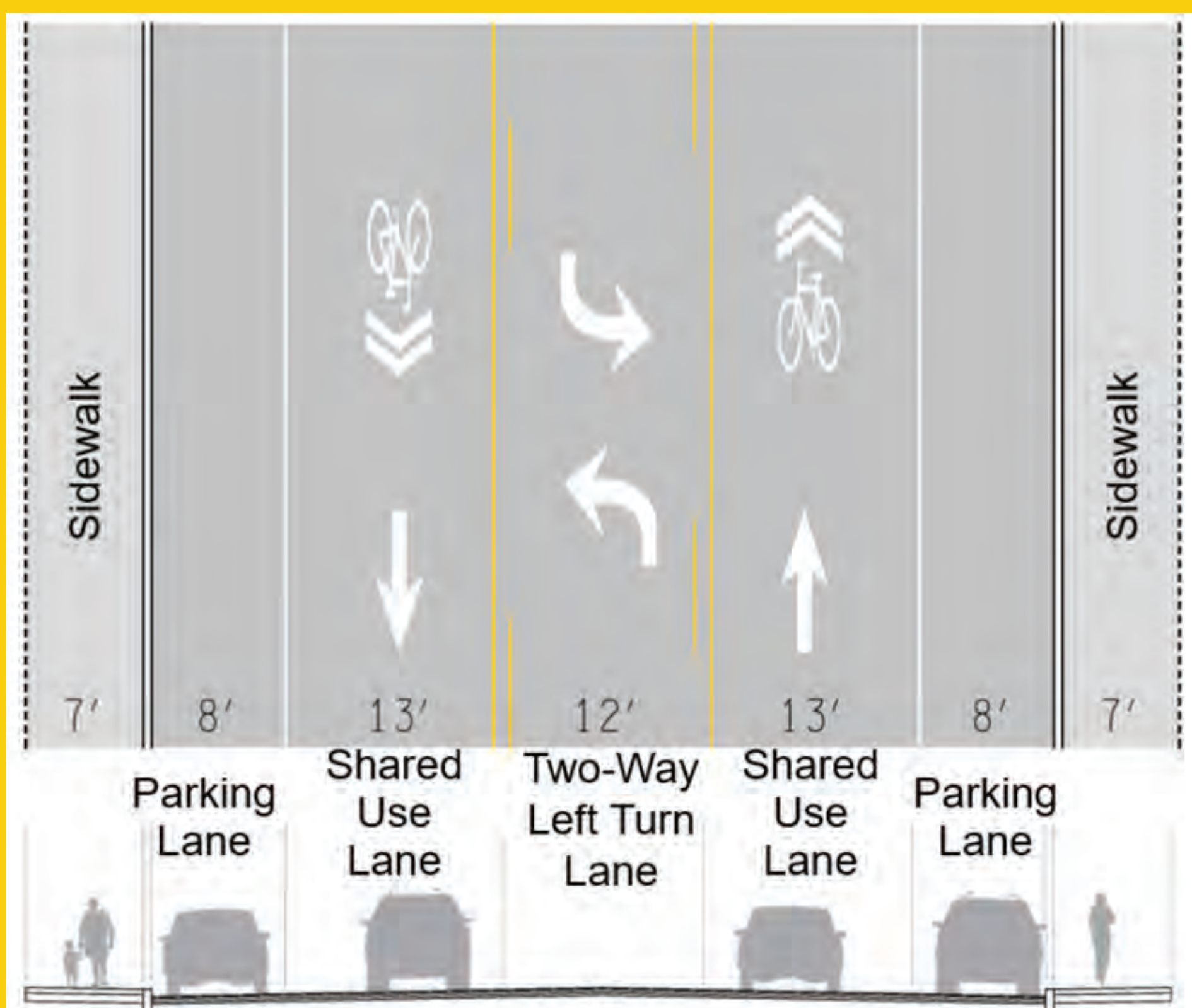


U.S. Route 1 Complete Streets

Project Description

The New York State Department of Transportation (NYSDOT) is evaluating the U.S. Route 1 corridor for opportunities to provide Complete Streets enhancements. A Complete Street is a roadway planned and designed to consider the safe, convenient access and mobility of roadway users of all ages and abilities, including pedestrians, bicyclists, public transportation riders, and motorists. This project will investigate recommendations to enhance safety, as well as pedestrian and bicycle facilities along U.S. Route 1. The project limits are between Dillon Road and Hornidge Road.

Conceptual Complete Streets Strategies



*The typical sections are conceptual and represent typical complete street elements



Department of Transportation

U.S. Route 1 Complete Streets



Source: Google Street View

Existing Conditions

- Travel Lanes - 9.5 ft. wide
- Parking Lanes - 8 ft. wide
- Sidewalks/Utility Strip/Snow Storage Space - 10 ft. wide
- Bicyclists Share the Travel Lane
- Curb to Curb Width - 54 ft. (narrowest width)
- Aerial Utilities Adjacent to Parking Lane
- Closed Drainage
- Real Estate Considerations

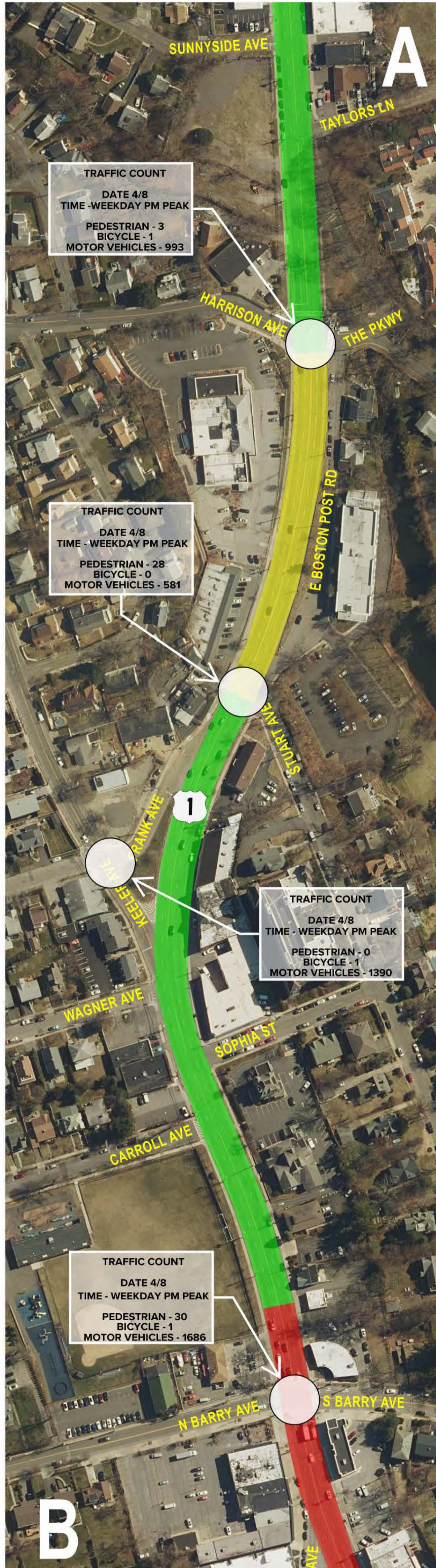
Schedule

- Stakeholder Meeting #1, July 2024
- Stakeholder Meeting #2, November 2024
- Open House #1 - Needs Assessment, June 2025
- Feasible Alternatives Development, Summer 2025
- Open House #2 - Potential Alternatives, Fall 2025
- Design Approval, Late Winter 2026
- Open House #3 - Preferred Alternative, Spring 2026
- Final Design, Summer 2026
- Construction Start TBD

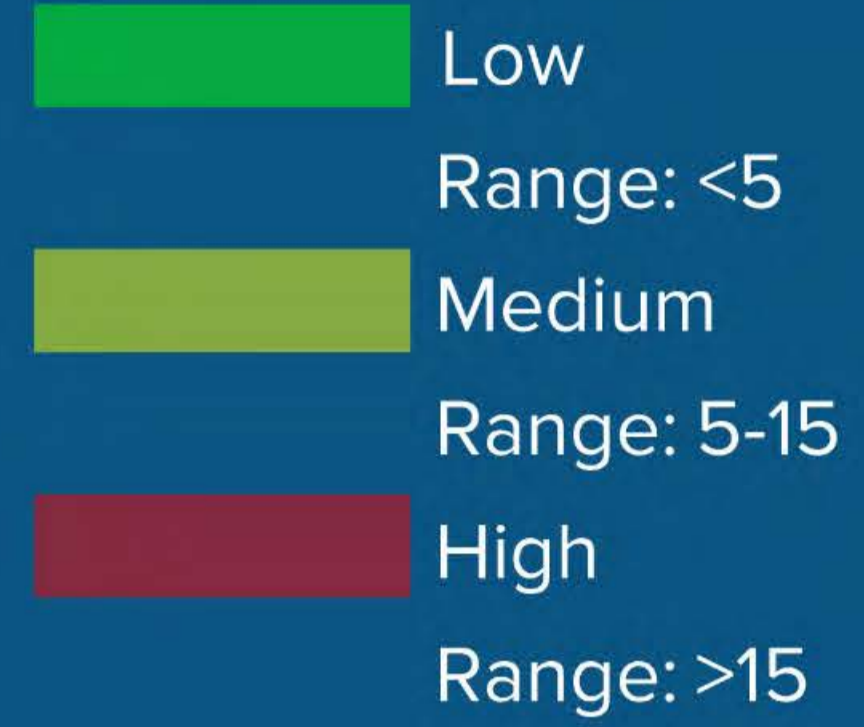


Department of
Transportation

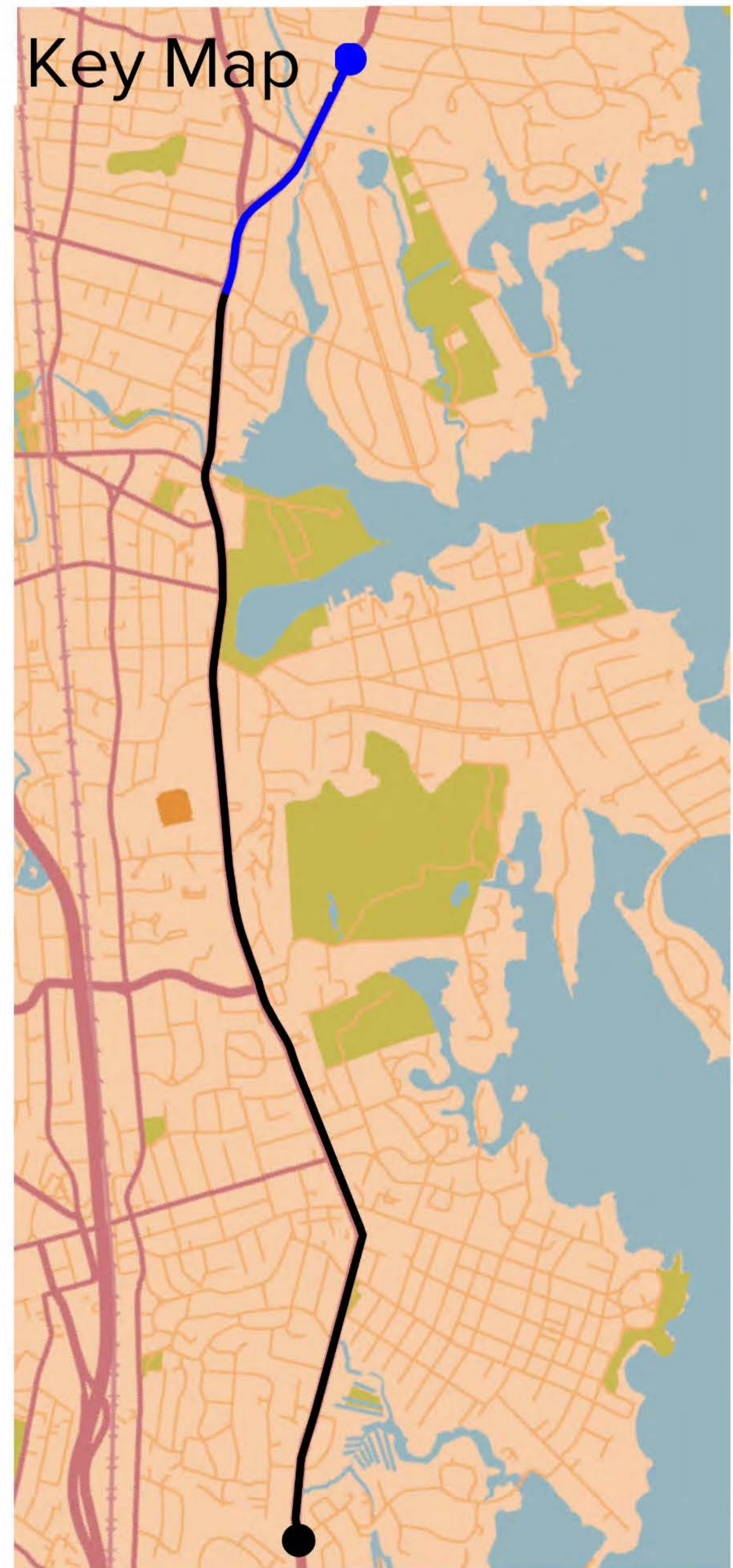
U.S. Route 1 Complete Streets



Crash Clusters

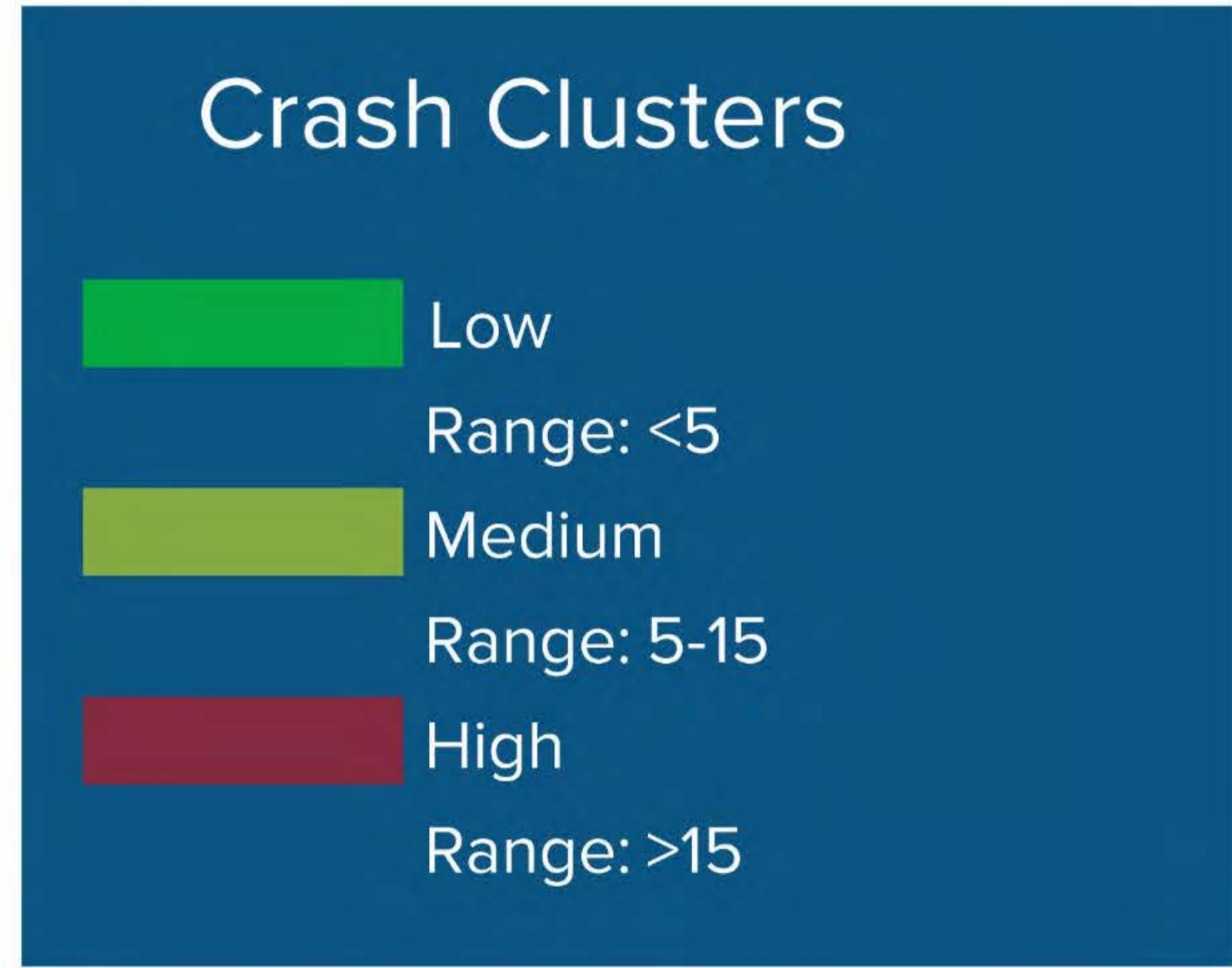
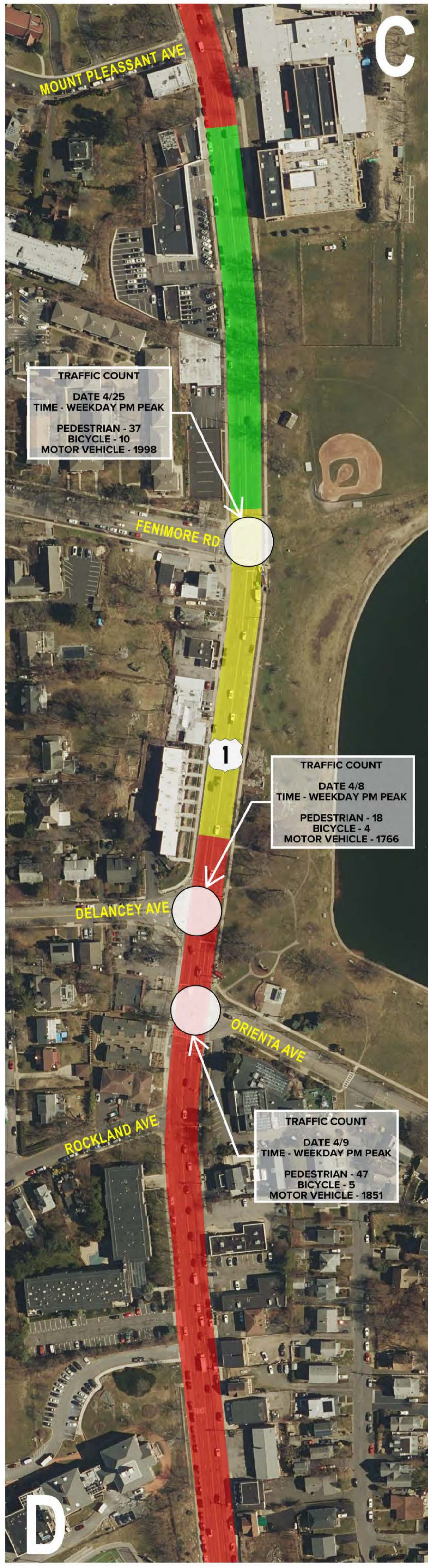
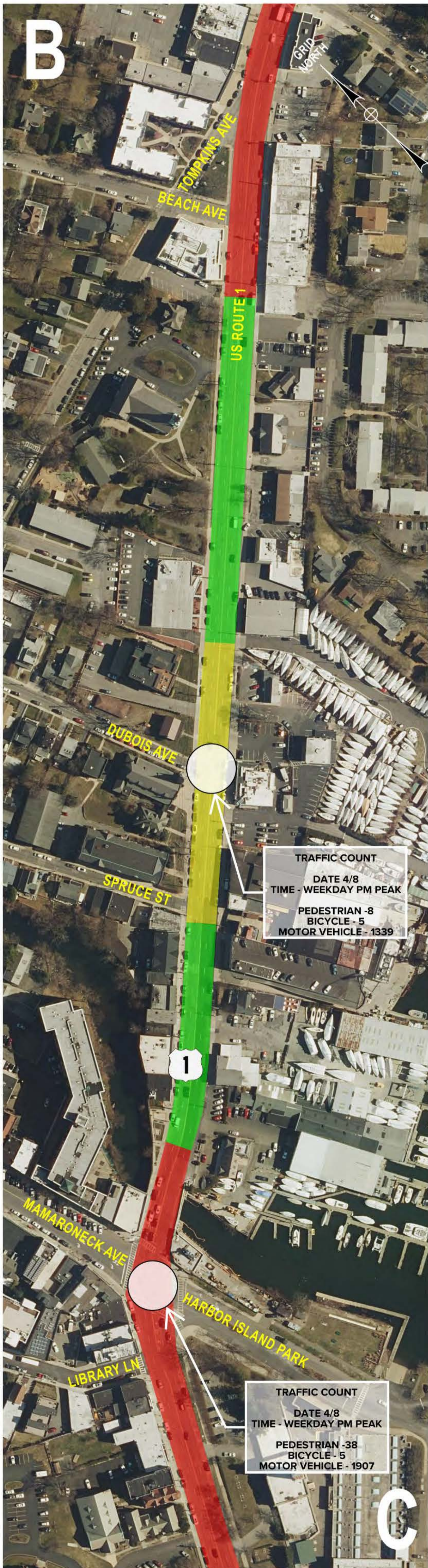


Key Map

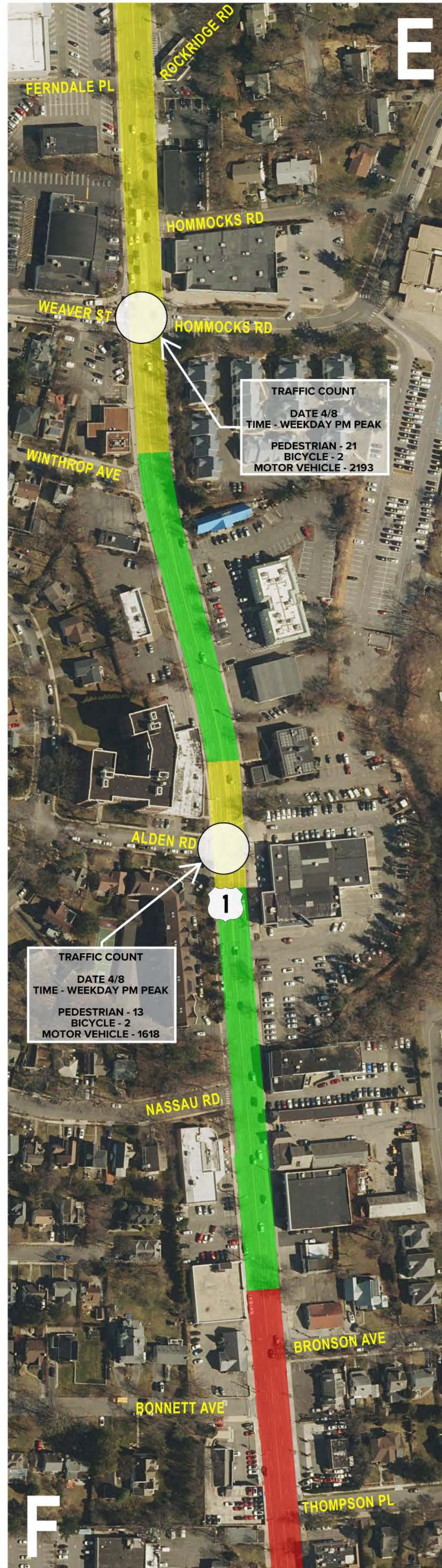
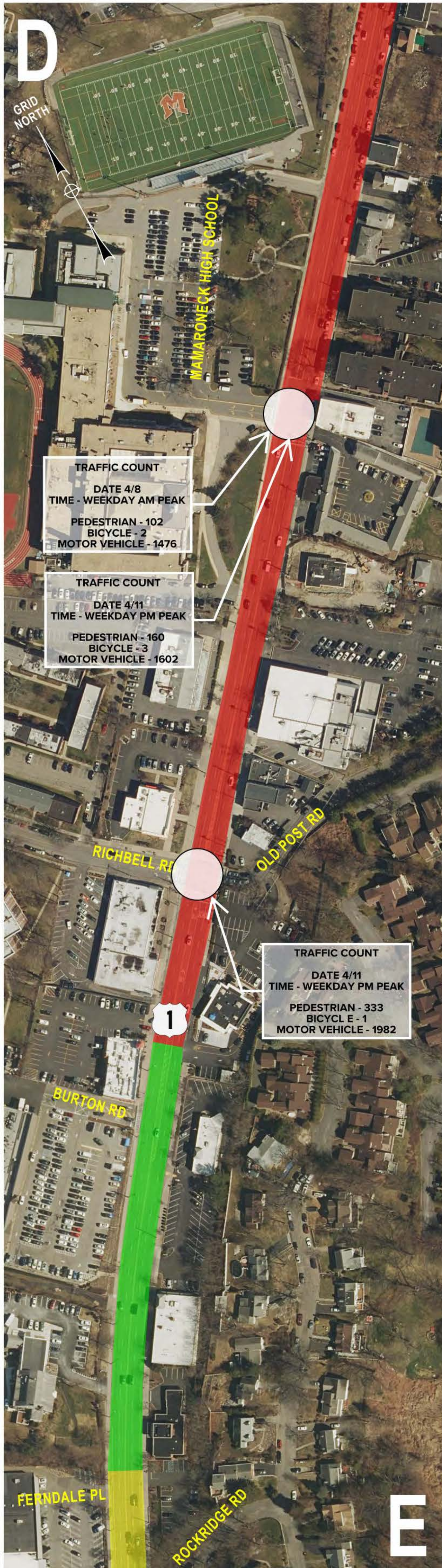


Department of
Transportation

U.S. Route 1 Complete Streets



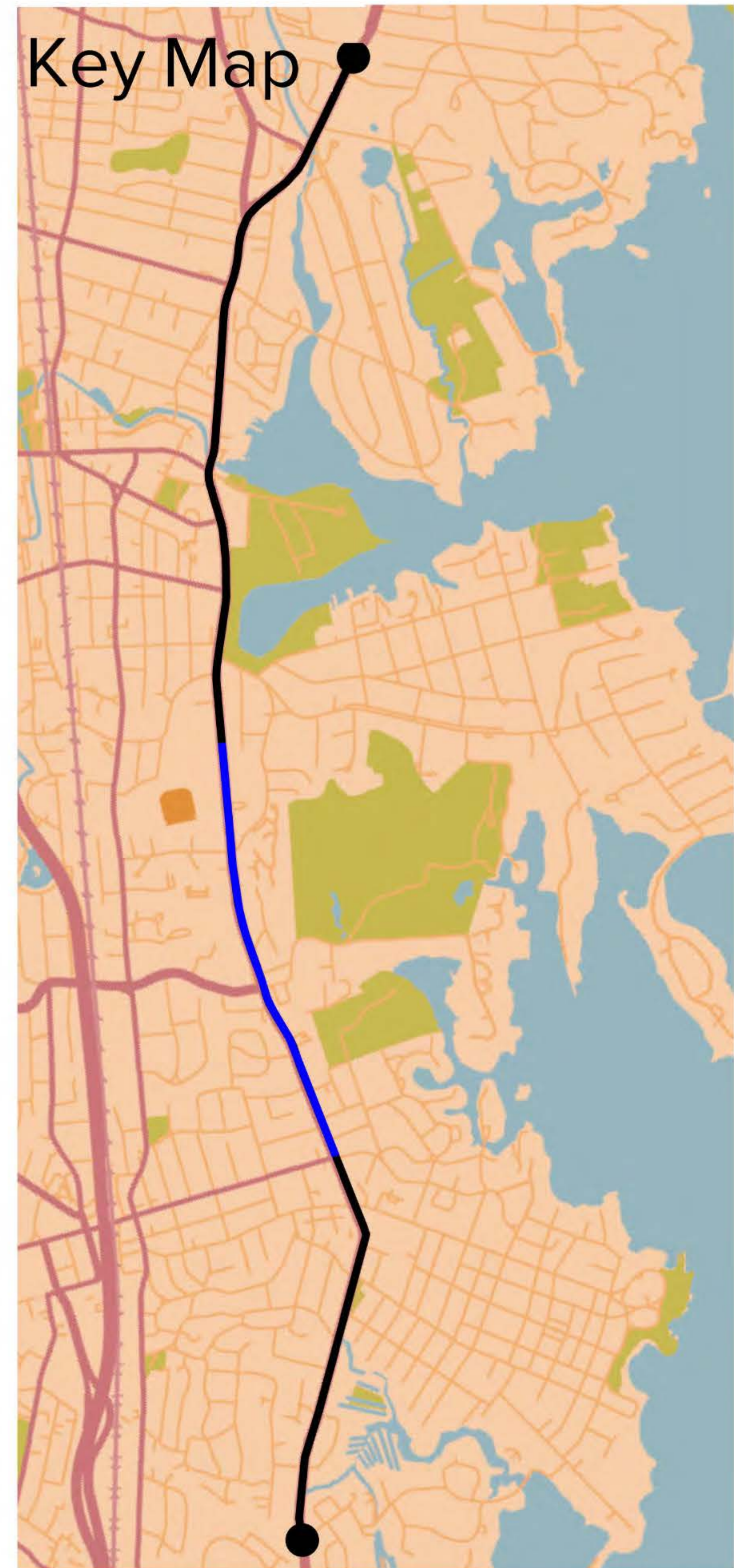
U.S. Route 1 Complete Streets



Crash Clusters

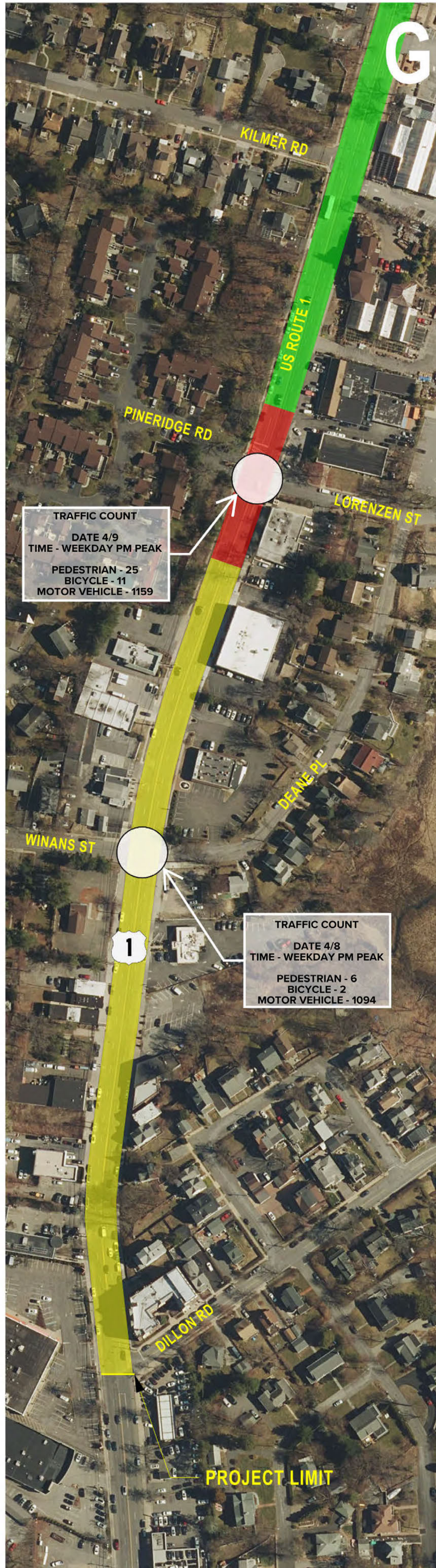
- Low
Range: <5
- Medium
Range: 5-15
- High
Range: >15

Key Map



Department of
Transportation

U.S. Route 1 Complete Streets



Crash Clusters

- Low
Range: <5
- Medium
Range: 5-15
- High
Range: >15

Key Map



Department of
Transportation